

Manufacturer carousel slider PRO

Professional Prestashop manufacturer logos slider

USER GUIDE

Version 1.0.1

Contents

1.	WELCOME	3
2.	REQUIREMENTS	3
3.	INSTALLATION	3
	❖ UPLOAD MODULE	3
	❖ MODULE CONFIGURATION	5
	❖ MODULE FRONT END	5
4.	THANK YOU	6

1. WELCOME

Thank you for purchasing our product. We hope to guide you through all the aspects of the module installation and the module setup within this document. But if you have any questions that are beyond the scope of this documentation, please feel free to contact us for more help.

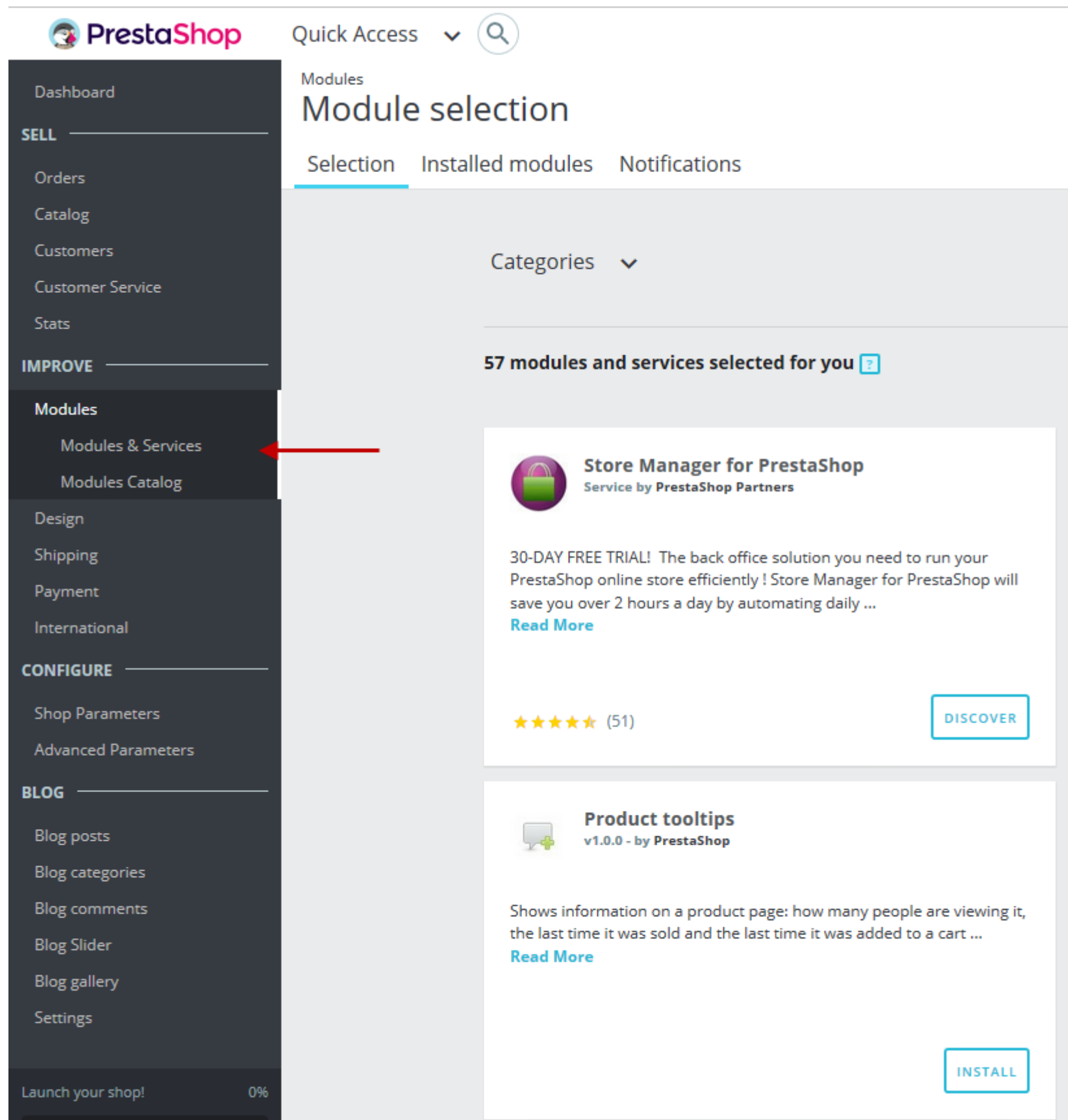
2. REQUIREMENTS

- A working Prestashop website with Prestashop 1.6.x or Prestashop 1.7.x installed
- This module is compatible with Prestashop 1.6.x and Prestashop 1.7.x

3. INSTALLATION

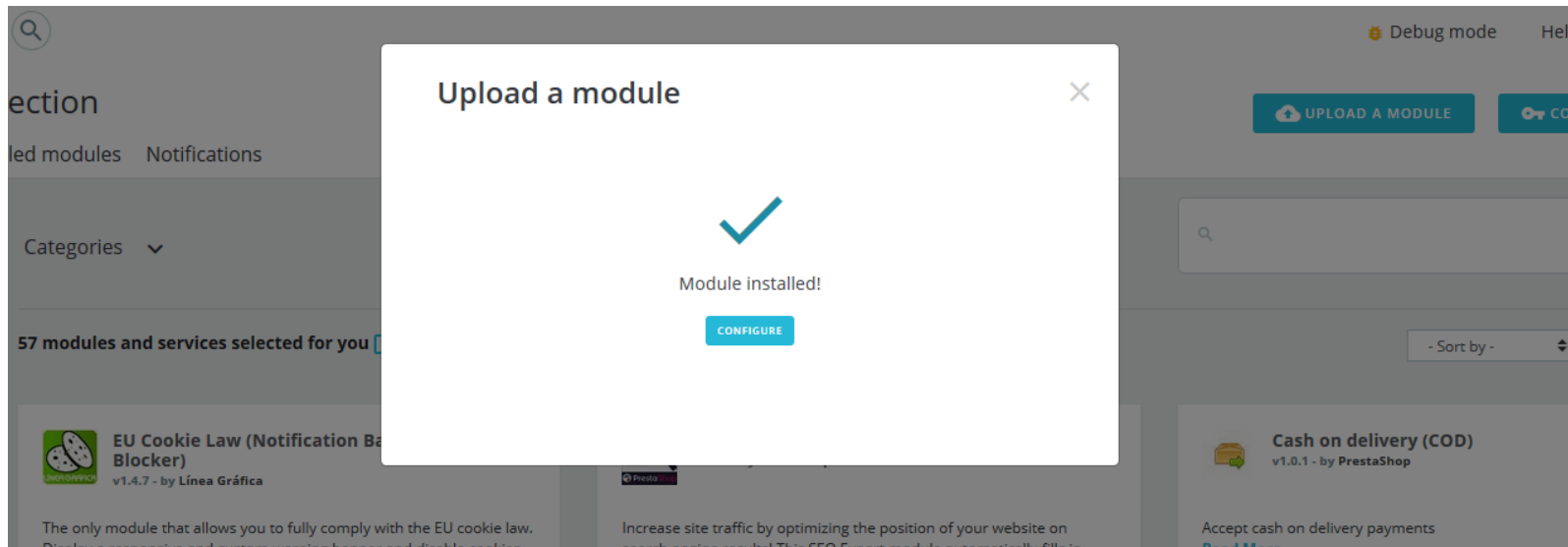
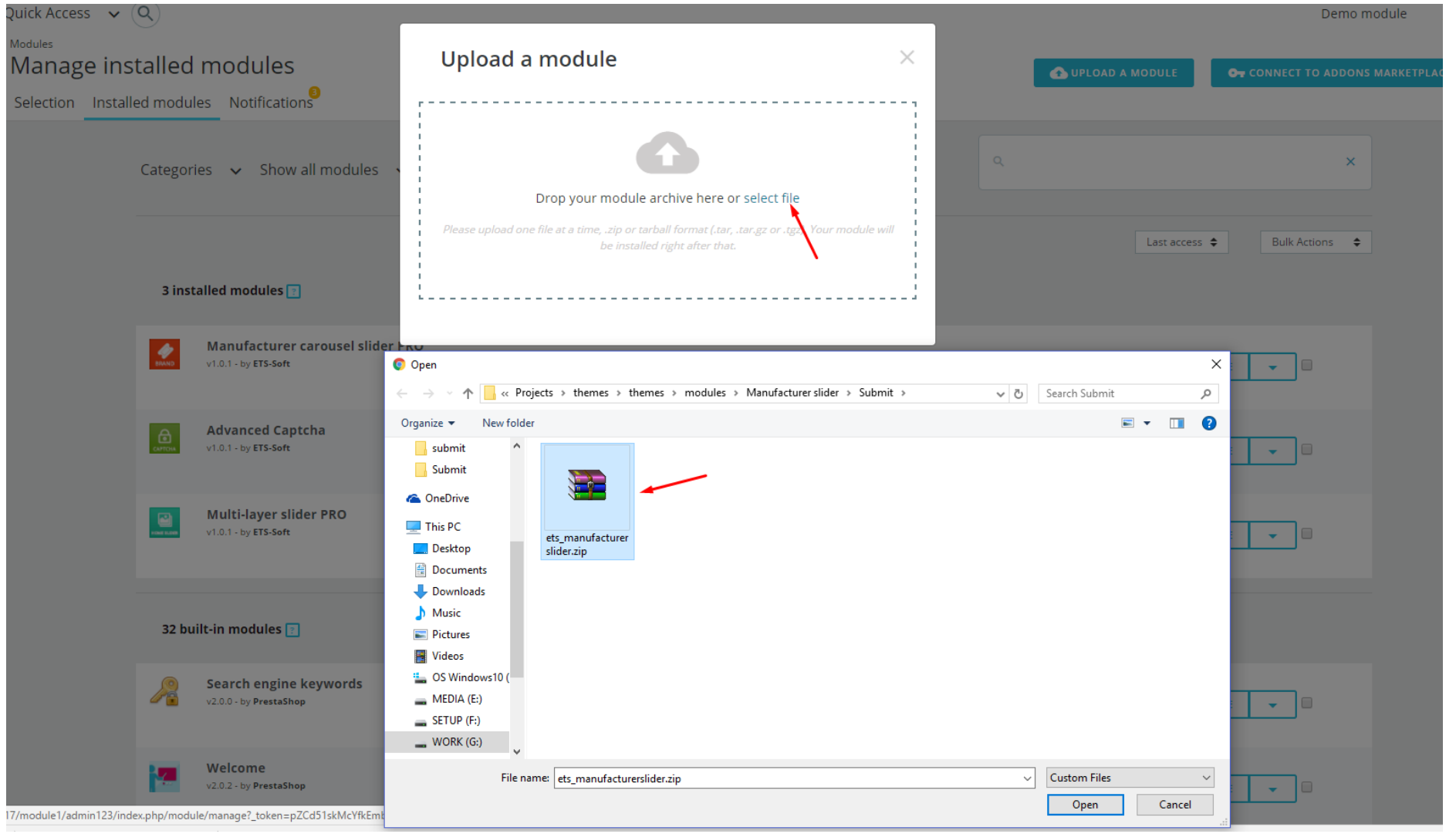
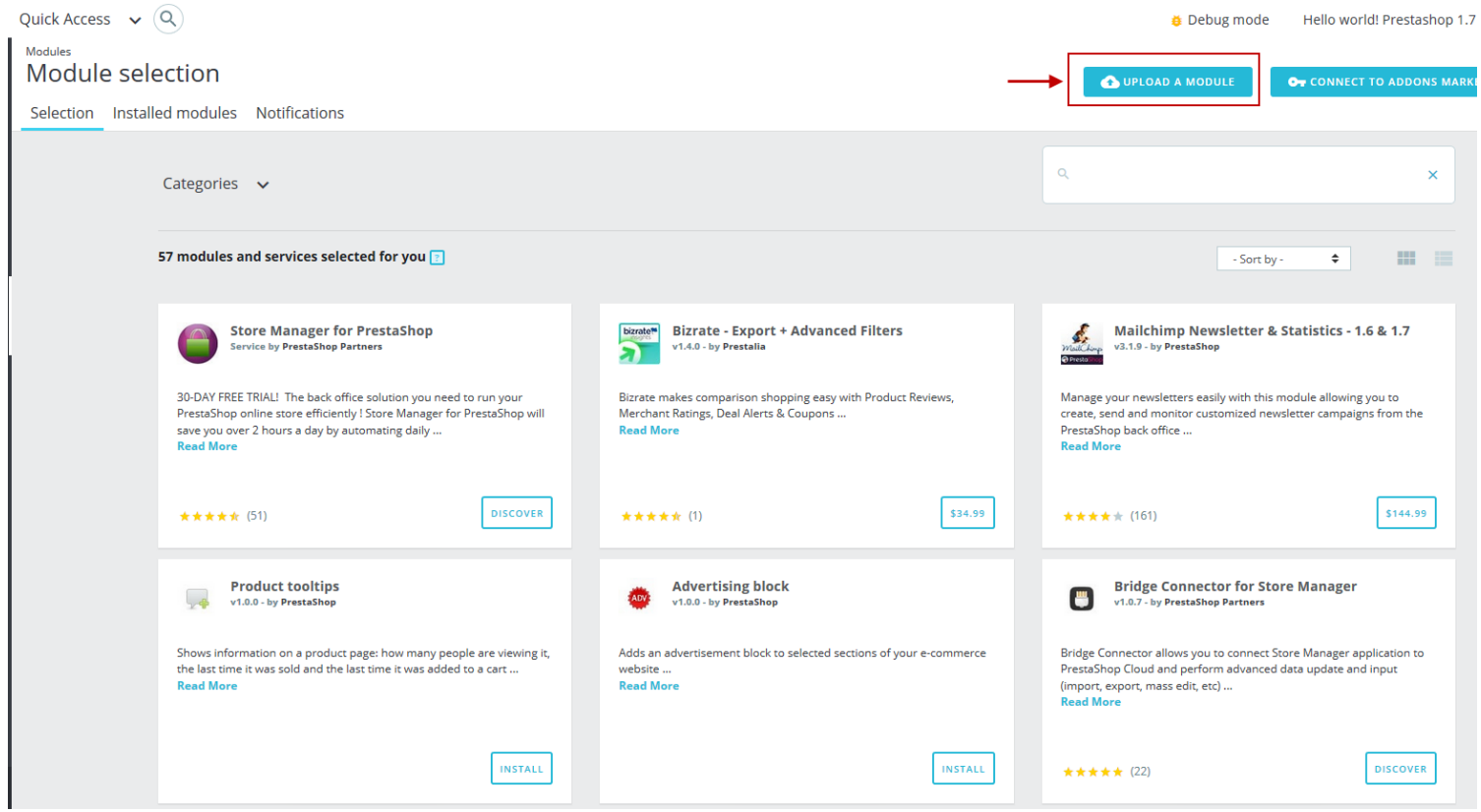
❖ UPLOAD MODULE

- Navigate to “*Modules / Modules & Services*”:



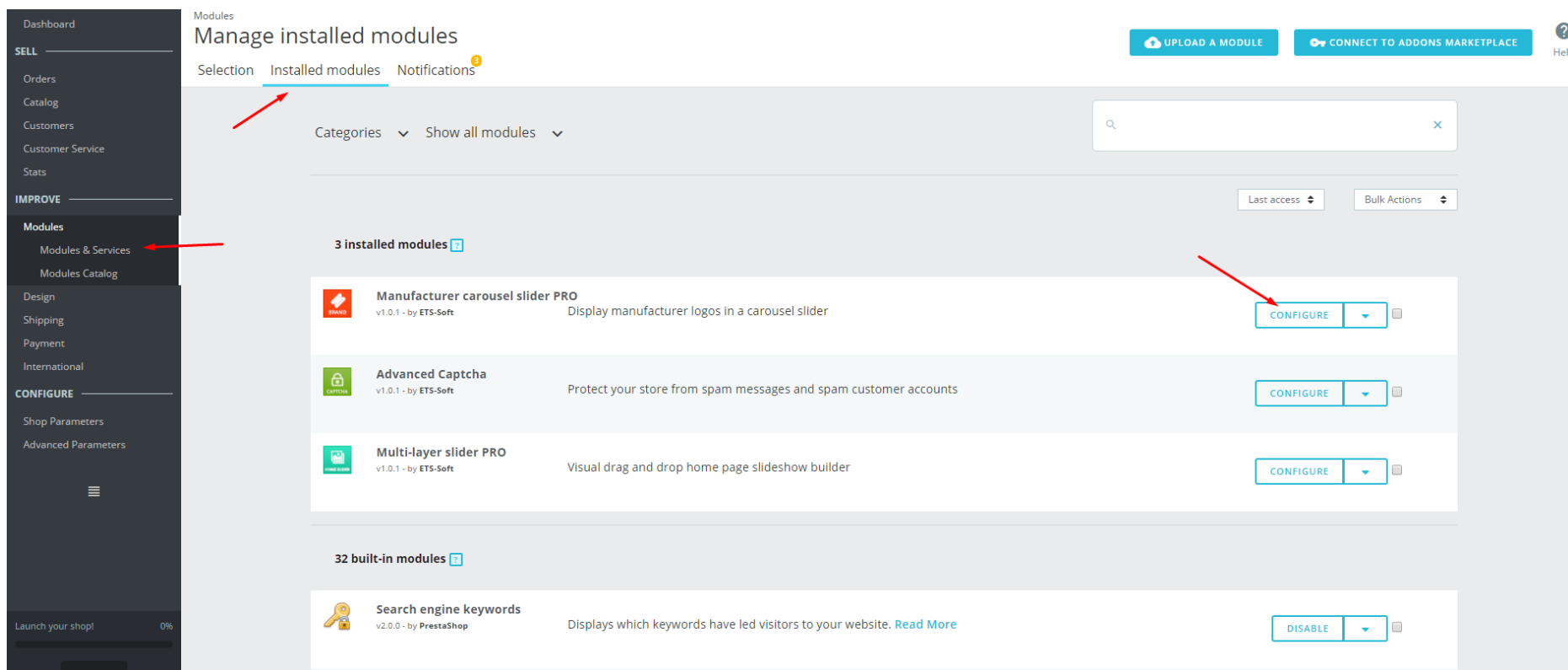
The screenshot displays the PrestaShop back office interface. At the top left is the PrestaShop logo and a 'Quick Access' dropdown menu. The main navigation sidebar on the left is divided into sections: 'SELL' (Orders, Catalog, Customers, Customer Service, Stats), 'IMPROVE' (Modules, Modules & Services, Modules Catalog), 'CONFIGURE' (Design, Shipping, Payment, International), and 'BLOG' (Blog posts, Blog categories, Blog comments, Blog Slider, Blog gallery, Settings). A red arrow points to the 'Modules & Services' menu item. The main content area is titled 'Module selection' and includes tabs for 'Selection', 'Installed modules', and 'Notifications'. Below the tabs, there is a 'Categories' dropdown and a notification that '57 modules and services selected for you'. Two module cards are visible: 'Store Manager for PrestaShop' (Service by PrestaShop Partners) with a 5-star rating and a 'DISCOVER' button, and 'Product tooltips v1.0.0 - by PrestaShop' with a 5-star rating and an 'INSTALL' button.

- Click on "Upload a module" and select the module .zip file (named *ets_manufacturerslider.zip*)

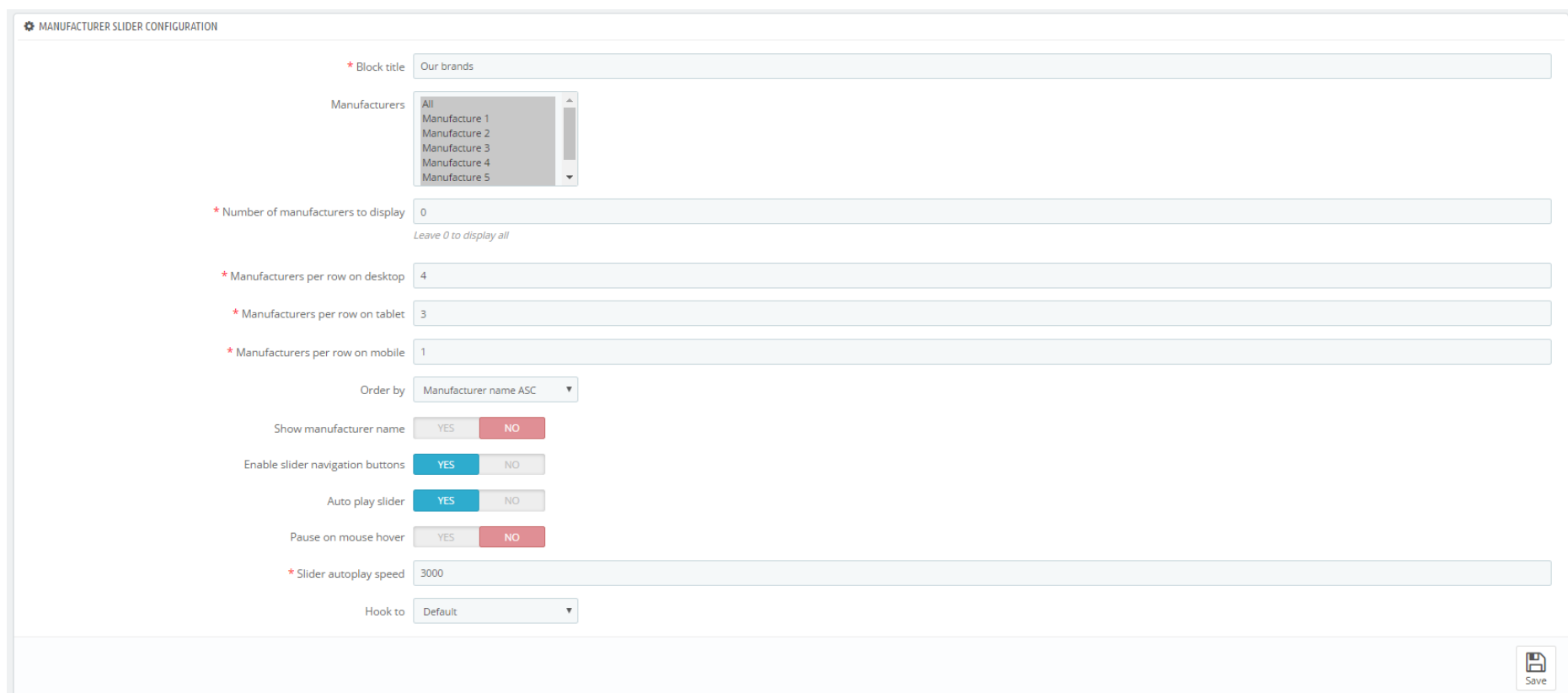


❖ MODULE CONFIGURATION

- Navigate to “Modules/modules & services”, Select “Installed module” tab then click on “Configure” of “Manufacturer carousel slider PRO”



- Configuration form



*Note:

- Upload manufacturer (brands) logos under “Catalog/Brands & Suppliers”
- Manufacturer logo images should be in the same dimension (our recommended dimension is 250 px x 150 px)

❖ MODULE FRONT END



4. THANK YOU

Thank you again for purchasing our product and going through this documentation. We hope this document is helpful and useful in the complete setup of your website.

If you do have any questions for which the answer is not available in this document, please feel free to contact us.